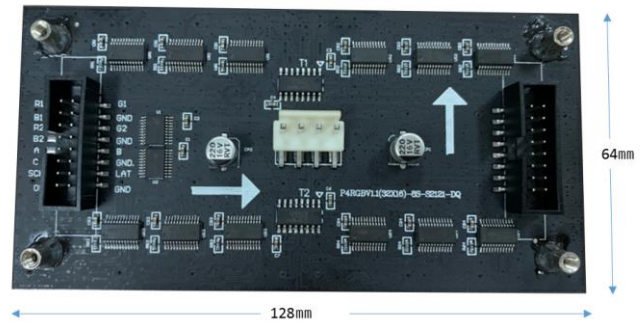


Specification of LED modules

Product : P4-16x32pixel-64x128mm-8S-Outdoor	PN : LMD-P4-1R2C-8S
---	---------------------

(1) Picture



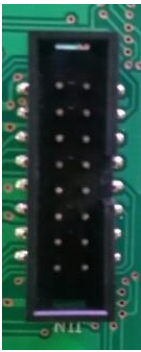
(2) LED SPEC.

No.	Item	Description
1	LED spec.	3In-1 SMD LED
2	LED Pitch	4mm

(3) MODULE SPEC.

Size(Height x Width x Depth)	64 x 128 mm
Resolution (H x W)	16 x 32 dots
Density (dots/m ²)	62,500 dots/m ²
Weight (Kg)	< 0.1 kg
Brightness	≥6000cd/m ²
Connecter type	HUB75, 16pin
Driving method	1/8 Scan
View angle	Horizontal: ≥140 degree , Vertical: ≥140 degree
Best view distance	5 ~ 14M
Color	R,G,B 4096Gray
Display color	4096*4096*4096
Life span	>8000 hours
Voltage	DC 5V
Power consumption (Max.)	≤6 W/pc
Average power	≤3 W/pc (when displaying text only)
Power per 1m ² (Max.)	732 W/m ²
Average power per 1m ²	366 W/m ² (when displaying text only)
Working temperature	-20°C ~ 60°C
Working humidity	10% ~ 90%RH

(4) Pin map of the data connector

Pin Map (J1)	Pin No.	Pin Name	Pin No.	Pin Name
	1	RD1	2	GD1
	3	BD1	4	GND
	5	RD2	6	GD2
	7	BD2	8	GND
	9	A	10	B
	11	C	12	P-ON-OUT,
	13	CLK	14	LATCH
	15	OE	16	GND

(5) Drawing of the frame

Fixing screw : M3 x 4pcs

Display Signal Type: **08D-P16D2S11-1^9**, Refer to "[Protocol Simulator Manual, A-7. How to set LED Display Signal](#)"