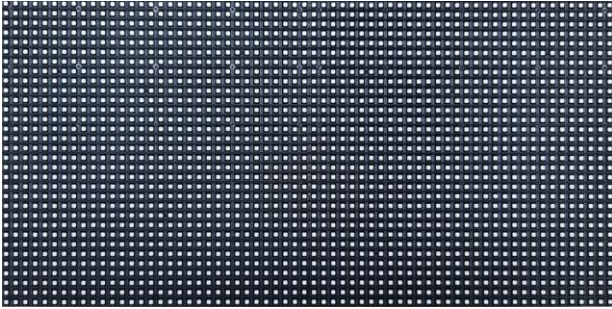


Specification of LED modules

Product : P5(2727)-32x64pixel-160x320mm-8S-Outdoor	PN : LMD-P5-2R4C-8S
--	----------------------------

(1) Picture



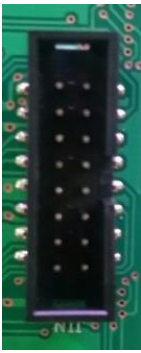
(2) LED SPEC.

No.	Item	Description
1	LED spec.	3In-1 2727 SMD LED
2	LED Pitch	PH=5mm

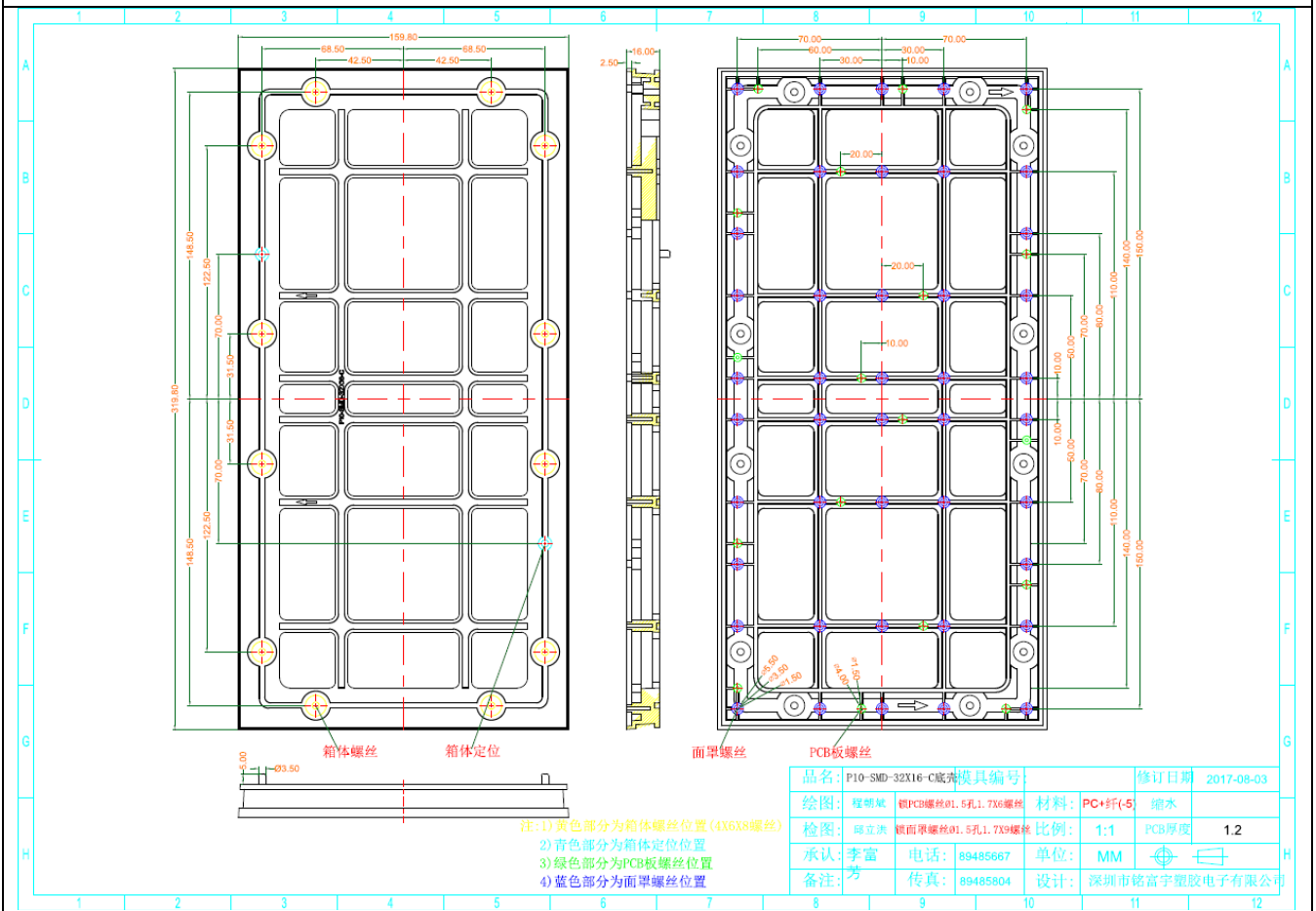
(3) MODULE SPEC.

Size(Height x Width x Depth)	160 x 320 x 16.6 mm
Pixels	32 x 64 dots
Density (dots/m ²)	38750 dots/m ²
Weight (Kg)	0.450kg
Brightness	≥5900cd/m ²
Connecter type	HUB75
Driving method	1/8duty Constant current method
View angle	Horizontal: ≥170 degree , Vertical: ≥120 degree
Best view distance	7 ~ 17M
Color	R,G,B 4096Gray
Display color	4096*4096*4096
Life span	>8000 hours
Voltage	DC5V
Power consumption (Max.)	≤45 W/pc
Average power	≤22 W/pc (when displaying text only)
Power per 1m ² (Max.)	879 W/m ²
Average power per 1m ²	439 W/m ² (when displaying text only)
Working temperature	-20°C ~ 60°C
Working humidity	10% ~ 90%RH

(4) Pin map of the data connector

Pin Map (J1)	Pin No.	Pin Name	Pin No.	Pin Name
	1	RD1	2	GD1
	3	BD1	4	GND
	5	RD2	6	GD2
	7	BD2	8	GND
	9	A	10	B
	11	C	12	P-ON-OUT,
	13	CLK	14	LATCH
	15	OE	16	GND

(5) Drawing of the frame



Fixing screw : M4 x 12pcs
Waterproof packing included

Display Signal Type: **08D-P32D1S12**, Refer to "[Protocol Simulator Manual, A-7. How to set LED Display Signal](#)"