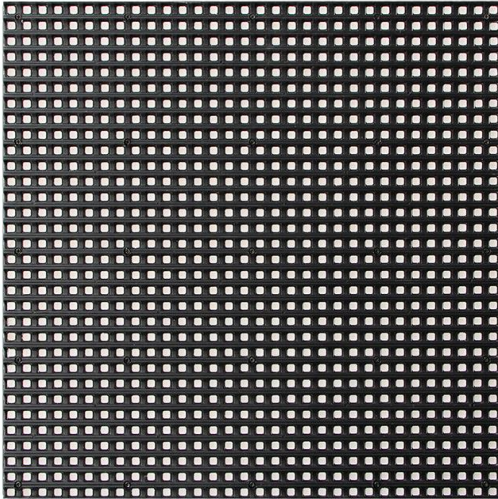


Specification of LED modules

Product : P6(3535)-32x32pixel-192x192mm-8S-Outdoor

PN : **LMD-P6-2R2C-8S**

(1) Picture



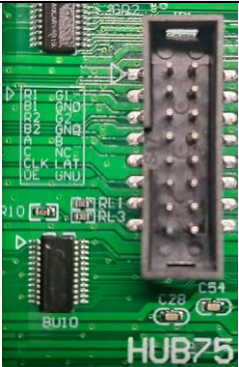
(2) LED SPEC.

No.	Item	Description
1	LED spec.	3In-1 3535 SMD LED
2	LED Pitch	PH=6mm

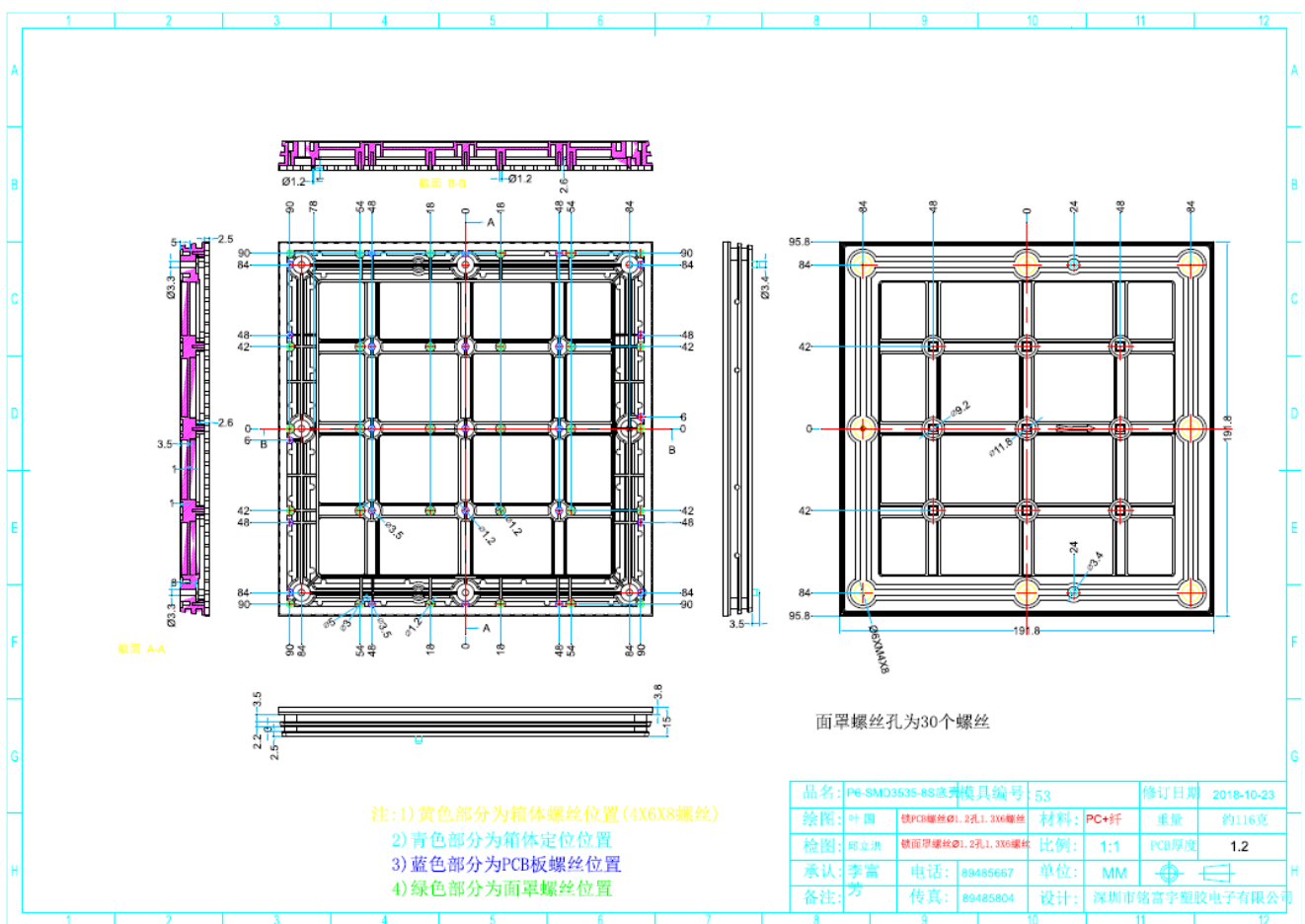
(3) MODULE SPEC.

Size(Height x Width x Depth)	192 x 192 x 18mm
Resolution (H x W)	32x32 dots
Density (dots/m ²)	27777 dots/m ²
Weight (Kg)	0.360kg
Brightness	≥6000cd/m ²
Connecter type	HUB75
Driving method	1/8 Scan
View angle	Horizontal: ≥140 degree , Vertical: ≥120 degree
Best view distance	8 ~ 18 M
Color	R,G,B 4096Gray
Display color	4096*4096*4096
Life span	>8000 hours
Voltage	DC5V
Power consumption (Max.)	≤32 W/pc
Average power	≤16 W/pc (when displaying text only)
Power per 1m ² (Max.)	868 W/m ²
Average power per 1m ²	434 W/m ² (when displaying text only)
Working temperature	-20°C ~ 60°C
Working humidity	10% ~ 90%RH

(4) Pin map of the data connector

Pin Map (J1)	Pin No.	Pin Name	Pin No.	Pin Name
	1	RD1	2	GD1
	3	BD1	4	GND
	5	RD2	6	GD2
	7	BD2	8	GND
	9	A	10	B
	11	C	12	NC
	13	CLK	14	LATCH
	15	OE	16	GND

(5) Drawing of the frame



Fixing screw : M4 x 8pcs
 Waterproof packing included

Display Signal Type: **08D-P64D1S61**, Refer to "[Protocol Simulator Manual, A-7. How to set LED Display Signal](#)"